

# Proposal for HD indoor Screen



## P7.62 Iron cabinet economic solution



Iron cabinet back view



cabinet front view



module

# 1. Technical Specifications Led Display System, pitch 7.62 mm outdoor

1	Pixel Pitch	7.62mm
2	Chip of LED	Cree
3	LED per pixel	3in1 (first selection LEDs, to ensure color uniformity)
4	Resolution	17222 pixle/m <sup>2</sup> (uniformly spread over the surface, to ensure homogeneity)
5	LED Number per/m <sup>2</sup>	17222
6	Screen Graphic Definition	768 x 480 dots, 768x768mm and 768x 1024mm
7	Screen Configuration (W×H)	Easley installable cabinets (Modular structure, allow any shape and size)
8	Cabinet Material	Cold rolled Steel
9	Single Cabinet Weight	25 to 45KG
10	Power Supply	Taiwan Meanwell
11	Best View Distancing	6-150 m
12	Vertical Viewing Angle	140° (Standard LEDs Viewing Angle)
13	Horizontal Viewing Angle	140° (Standard LEDs Viewing Angle)
14	Available Color Palette	281 trillions colors(to see detail even in the darkest area of the image)
15	Brightness	>3000cd/m <sup>2</sup> Ensure brilliant images
16	Brightness Adjustment	Manual, 256 level; Auto, 8 levels
17	Grey Scale	16,384 Shades Per Color
18	Operating Temperature	-30℃~+60℃ 10%~95%RH
19	LEDs Lifetime	>100,000 Hours(over 11 years lifetime)
20	Input Voltage	AC110V/220V/380V±10%
21	Screen Power Consumption	Max: 1200w/cabinet; Average: 960w/cabinet
22	Refresh Rate	1600HZ(no flickers while camcorder recording)
23	Control Method	Synchronized with computer monitor
24	Way of Drive	1/4 scanning
25	Color Temperature	6500K±500
26	Control Distance	120 m (no repeating); Optical fiber transmission: 500m- 10km



# P6mm Iron cabinet economic solution



Iron cabinet back view



cabinet front view

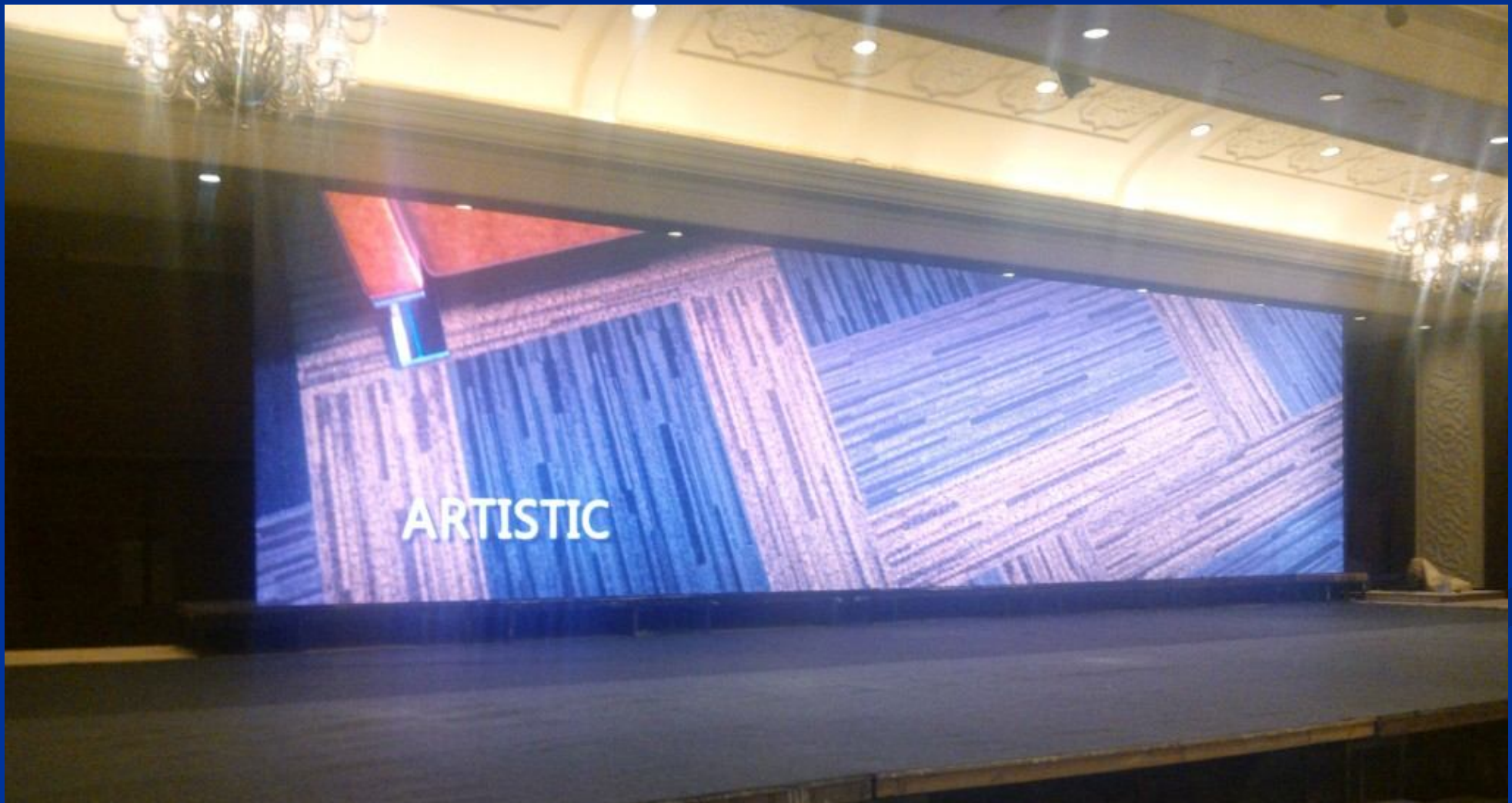


module

### 3. Technical Specifications Led Display System, pitch 6 Black led Indoor

Serial Number	Specification	PH6
1	Model No	<b>SLD—14/15-P6-1R1G1B(3in1)</b>
2	Module Resolution	32×16=512 (dot)
3	Module Size	244mm ×244mm
5	Cabinet Size	576mm×576mm
6	Resolution/cabinet	96×96(dot)
7	Density	27,777(dot/s.q.m)
8	LED Driving method	Constant driving 1/8 Scan
9	LED Standard	SMD3in1
10	Viewing Angle (H/V)	H: ±150°V:±120°
11	Brightness	≥2000CD/s.q.m
12	The Optimal viewing distance	3—38m
13	Display Colors	687(million)
14	Pixel configuration	1R1G1B
15	Protection Degree	31(IP)
16	Power	(Max.Consumption):1000 W/s.q.m (Average Power): 450 W/s.q.m
17	Control mode	Video Sync
18	Display Mode	640×480/800×600/1024×768
19	LED Parametres	(R):λd (619~624nm)IV: (200~260mcd) (G):λd (520~524.5nm)IV: (524~685mcd) (B):λd (468.5~472.5nm)IV:(176~215mcd)
20	Rate	≥180Hz
21	Communication	1000M Cats(≤120M)/Fiber optical (10.000m)

# Proposal for indoor p5mm HD Screen





# P5mm Iron cabinet economic solution



Iron cabinet back view



cabinet front view



module

Technical Specifications Led Display System,  
pitch 5 mm Indoor High Definition.

Pitch (mm)	P5
Model No.	SLD—14/15-P5-1R1G1B(3in1)
Dimension (WxH)	160mm x 80mm
Cabinet Size	480 X 480 mm
Module Resolution	32 x 16
Density (pixels/m <sup>2</sup> )	40000
Brightness Density	1800 cd/m <sup>2</sup>
Viewing distance	3m ~100m
Power consumption (Avg)	600 w/m <sup>2</sup>
Power consumption (Max)	1400 w/m <sup>2</sup>
Weight	10 to 25 kg per cabinet
Drive Mode	1/8 scanning
Viewing angle	Horizontal angle: 120°; Elevation angle: 60°; Depression angle: 60°
Gray scale	256 gray scale in each red, green, blue color
Colors	16 Million Colors
Refresh Velocity	= 60 frame/sec
Refresh Rate	Up to 4800HZ
Display Life	> 100 k hours
Display MTBF	10,000 hours
Blind Pixels Rate	= 0.0003
Working Voltage	AC 230V±15% 47 ~ 64HZ
Effective Control Distance	100m (1000 BASE-T Ethernet cable) 500 mtrs (optical fiber)
Operation Temperature	-20° C ~ 60° C



# P4mm aluminum cabinet solution



Die-Cast Aluminium cabinet back view



cabinet front view



module

Technical Specifications Led Display System,  
pitch 4 mm Indoor High Definition.

Pitch (mm)	P4
Model No.	SLD—14/15-P4-1R1G1B(3in1)
Dimension (WxH)	256mm x 256mm
Cabinet Size	512 X 512 mm
Module Resolution	64 x 64
Density (pixels/m <sup>2</sup> )	62500 dots/sqm
Brightness Density	1800 cd/m <sup>2</sup>
Viewing distance	3m ~100m
Power consumption (Avg)	400 w/m <sup>2</sup>
Power consumption (Max)	800 w/m <sup>2</sup>
Weight	8kg to 20 kg per cabinet
Drive Mode	1/8 or 1/4 scanning
Viewing angle	Horizontal angle: 120°; Elevation angle: 60°; Depression angle: 60°
Gray scale	256 gray scale in each red, green, blue color
Colors	16 Million Colors
Refresh Velocity	= 60 frame/sec
Refresh Rate	Up to 2500HZ
Display Life	> 100 k hours
Display MTBF	10,000 hours
Blind Pixels Rate	= 0.0003
Working Voltage	AC 230V±15% 47 ~ 64HZ
Effective Control Distance	100m (1000 BASE-T Ethernet cable) 500 mtrs (optical fiber)
Operation Temperature	-20° C ~ 60° C

## Other Parameters

Contents	Detail
Viewing angle	Horizontal:110 degree;Vertical:75degree
Color display	10.7billion
Driving Method	1/4 Static,Constant current
Driving Method	1/4 Static,Constant current
Refresh frequency	480HZ
Input signal	RF,S-VIDEO,rgb,RGBTV,YUT ,YC,COMPOSITION
Working environment	Temperature-20 C~ +60 C; Humidity:10%~95%
Input Voltage	AC110V/60HZ;AC220V/50HZ optional



# Key Features and Advantages

1. As R-G-B LED, more colorful than ordinary LED displays enabling them to show high frequency dynamic images.
2. The brightness is higher because of advantage from its built-in reflection cavity.
3. P7.6, P6 and P4 Led Display has high brightness and adjustable contrast. This model has a good lighting accordance and has no mosaic
4. Pixel pitch can be made very small; high resolution is suitable for closer watching.
5. Viewing angle is available up to 160 degrees; the showing contents won't be disordered.
6. Integrated and modularized design, reasonable layout, is the best advantage for heat dissipation.
7. Our LED screen is controlled by instant current and high gray degree technology, so it is long lifespan, rich color and uniform light.
8. It's high guaranteed for good quality produced by high speed auto mount machine.
9. Simple and light frame is easy for installation

note- p 7.6, P6 & P4 mm Led Display picture of the rental services to various clients are attached in our project Details, please have a glance

# LED Display Systems Installation

- Display Systems Allocation
- Installation Process

## • LED Display System Allocation

The LED Display Screens will be allocated at the locations as per the guidelines from Clients

## • LED Display System Installation

- AS per the dates given for the installation the complete installation of the display system will take place as possible earlier of the starting date after confirming the order.
- Once the Set up get installed at all the location there will be sufficient time for test run and coordination with the display oriented activities.



# LED Display Systems On Site Management

- Control Units
- Technical Support
- Other Back-up Support

# Control Units

1. Controllers are compatible for any of the input like VGA, DVI, All video supportable and live performance as well with coordination with video production team.
2. Our Switcher can accept the input (any Source ) for data and video Display on Screens.
3. The cabling and Control Panel set up will be based on onsite location analysis.
4. We provide controller in 3 user applications
  1. Sending card
  2. Asynchronies USB control card
  3. Video processor

# Technical Support

- LED screen is made of led bricks which are available all the time at all the locations, any problem in bricks will be replaced immediate.
- Zone wise we are based in Delhi, Mumbai, Bangalore, Kolkata, Ahmedabad, Indore, Chandigarh and Ranchi
- We ensure the after sale services with in 24-48 hours in case of none city and 24 hours in same city.
- LED screen can be design in any size any dimension as per the clientele requirement we provides the 2 time led design adjustment after installation for free.



# Why Us

- Our Projects
- Our Clients

# Our Recent Projects outdoor

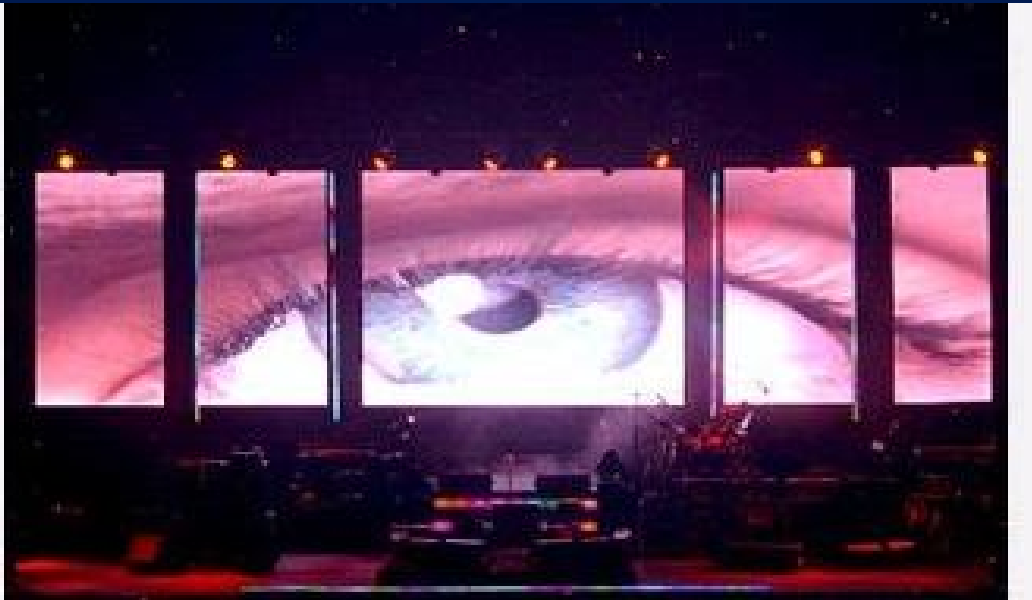


**ShinoBiz Lighting & Display**  
Biggest Outdoor & Indoor Led Screen on  
Rental & Hire

Mail Us:- [info@shinobiz.com](mailto:info@shinobiz.com) [shinobiz@live.com](mailto:shinobiz@live.com)  
Website:- [www.shinobiz.com](http://www.shinobiz.com)  
Contact Us:- +919810653503, 09990283289

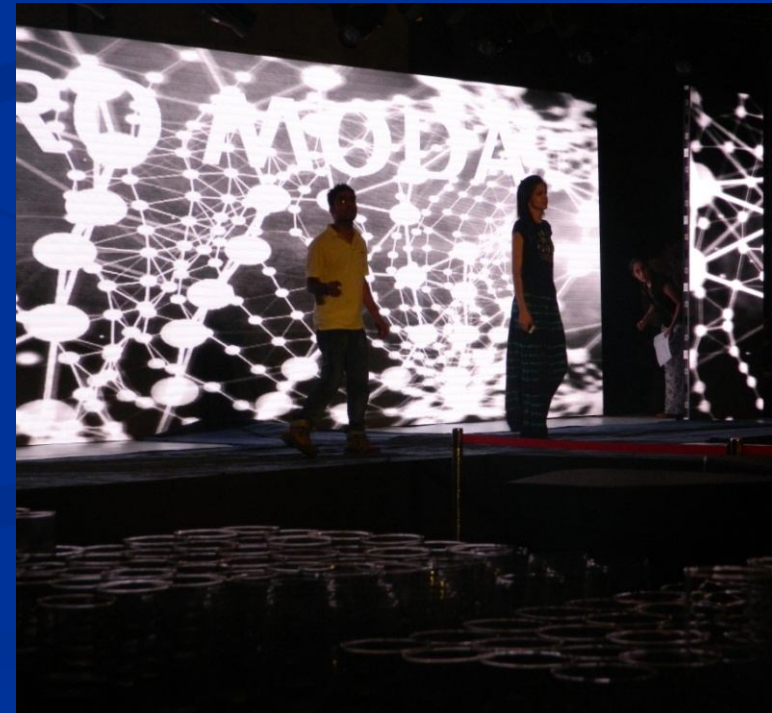


# Our Recent Projects exhibitions

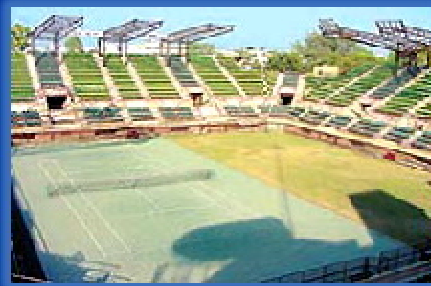
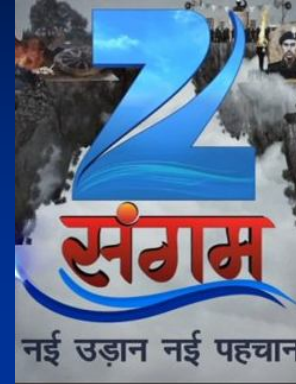




# Our Recent Projects indoor



# Some Of Our Prestigious Clients



R.K.Khanna  
Stadium



Note- the above clientele and Pics given for the reference are based on our LED Display screen rental performance basis  
For your reference we can provide you our more clientele with their Details as well.

# Thank you

*We Wish you  
a  
Shining growth*

Thanks & Regards

**ShinoBiz Lighting And Display**

HelpLine +91 9990283289 & 9810653503

Skype id- shinobizskype

Whats App id- +91 9990283289

Land Line (office) - 011-26364139

Mail - [info@shinobiz](mailto:info@shinobiz), [shinobiz@outlook.com](mailto:shinobiz@outlook.com)

Website :- [swww.shinobiz.com](http://swww.shinobiz.com)